

# The Pinafore - Pattern Number 721

# medium

## TAPING AND CUTTING OUT YOUR PATTERN

**Do not overlap the pages.** Butt together, lining up the sheets.

There will be a small border of empty space at the edges where your printer can't print. I do my best to ensure that there are no important details lost in the gap on each layout.

I produce a different layout for each size for economy of printing.

For clarity I avoid multi-size layouts.

**Net Pattern - Add seam allowance as you cut out.**

This layout is for **US Letter Paper** for **International A4 Paper** look for the option on the Pattern Download Page.

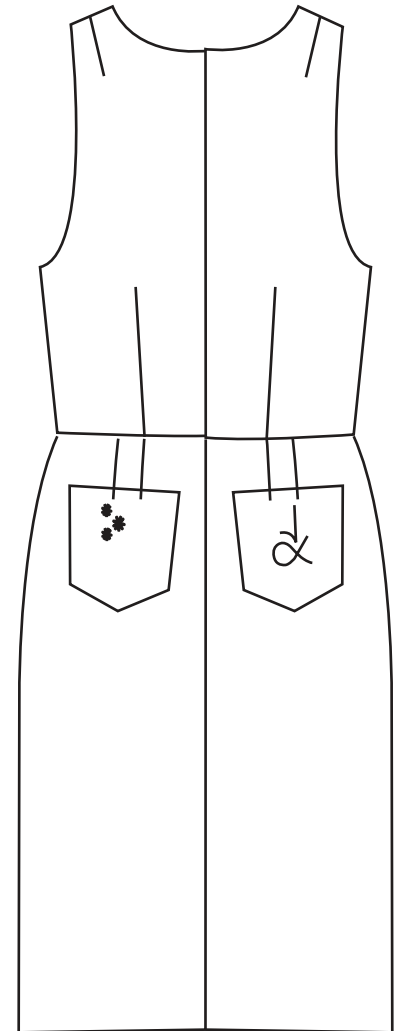
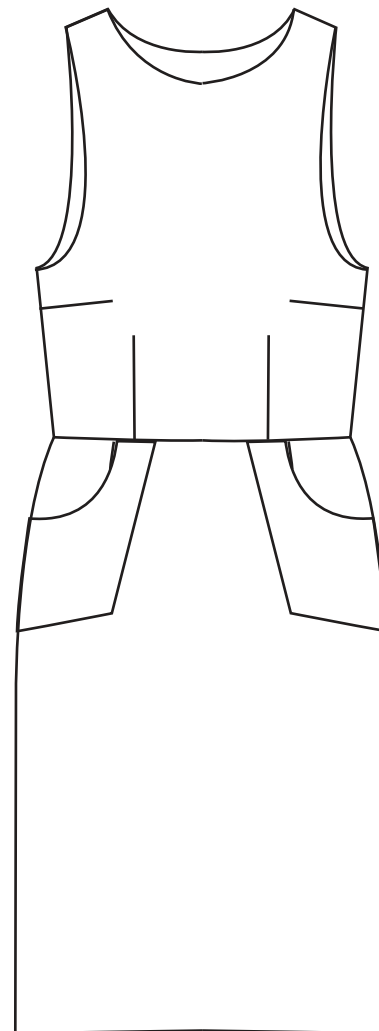
Please send feedback regarding this pattern to [contact@angelakane.com](mailto:contact@angelakane.com). Improvements and corrections are welcome.

To print just the pattern, start printing at page 5.

Copyright Angela Kane 2005-12 - All Rights Reserved  
Please Do Not Distribute. By purchasing the download you agree to make prints solely for your own use.

STRICTLY NOT FOR COMMERCIAL USE

## LETTER SIZE!



**\*\* CHECK THIS GRID \*\***

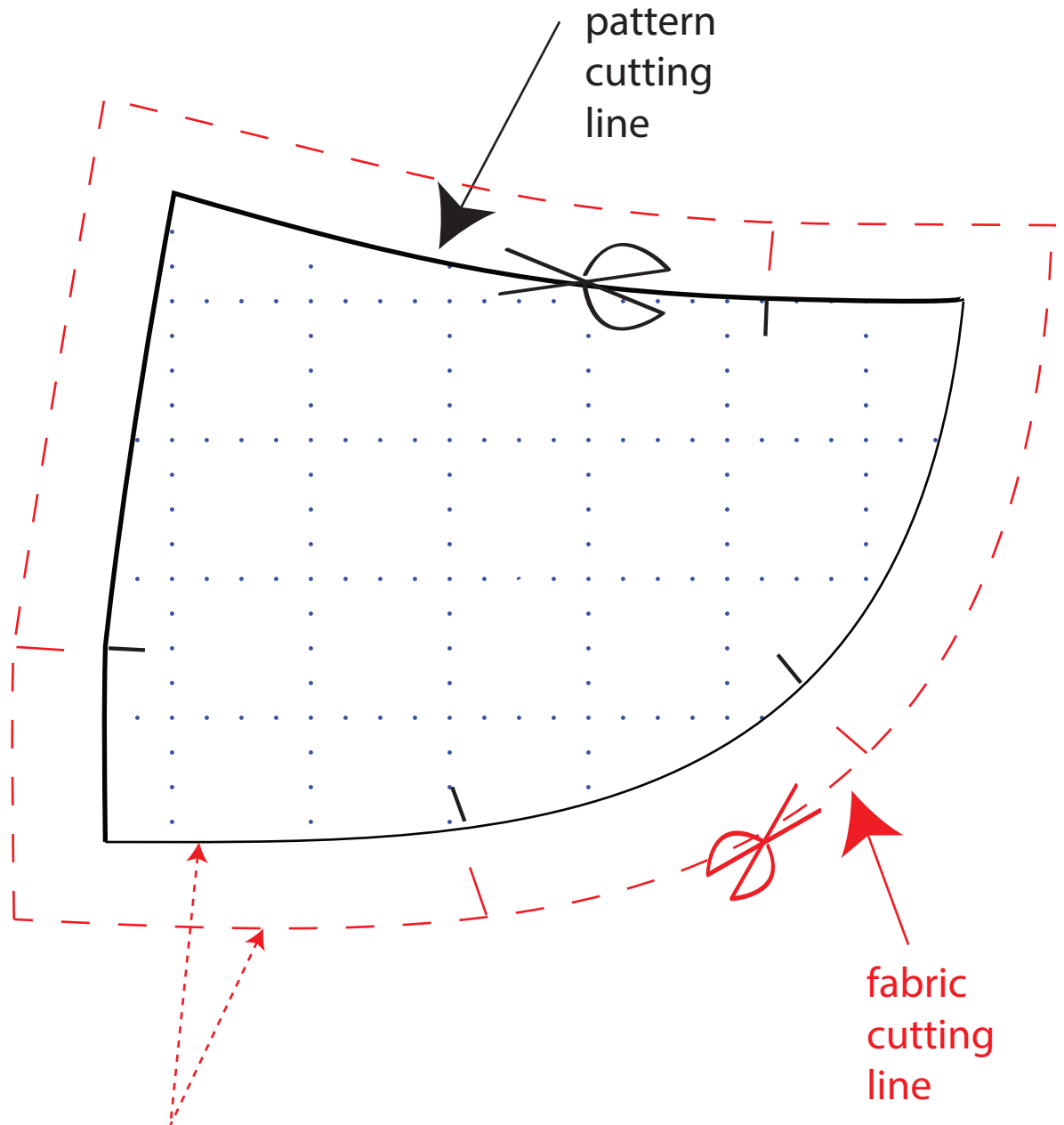
Grid should measure  
1" x 1"

Print setting must be  
NO SCALING or PRINT SCALE 100%

## TAKE VERY SPECIAL NOTE

My patterns are NET PATTERNS  
It is much easier and you will  
get used to judging the 5/8"  
fabric cutting line

mark notches with  
snips into seam  
allowance keeping  
well short of seam  
line

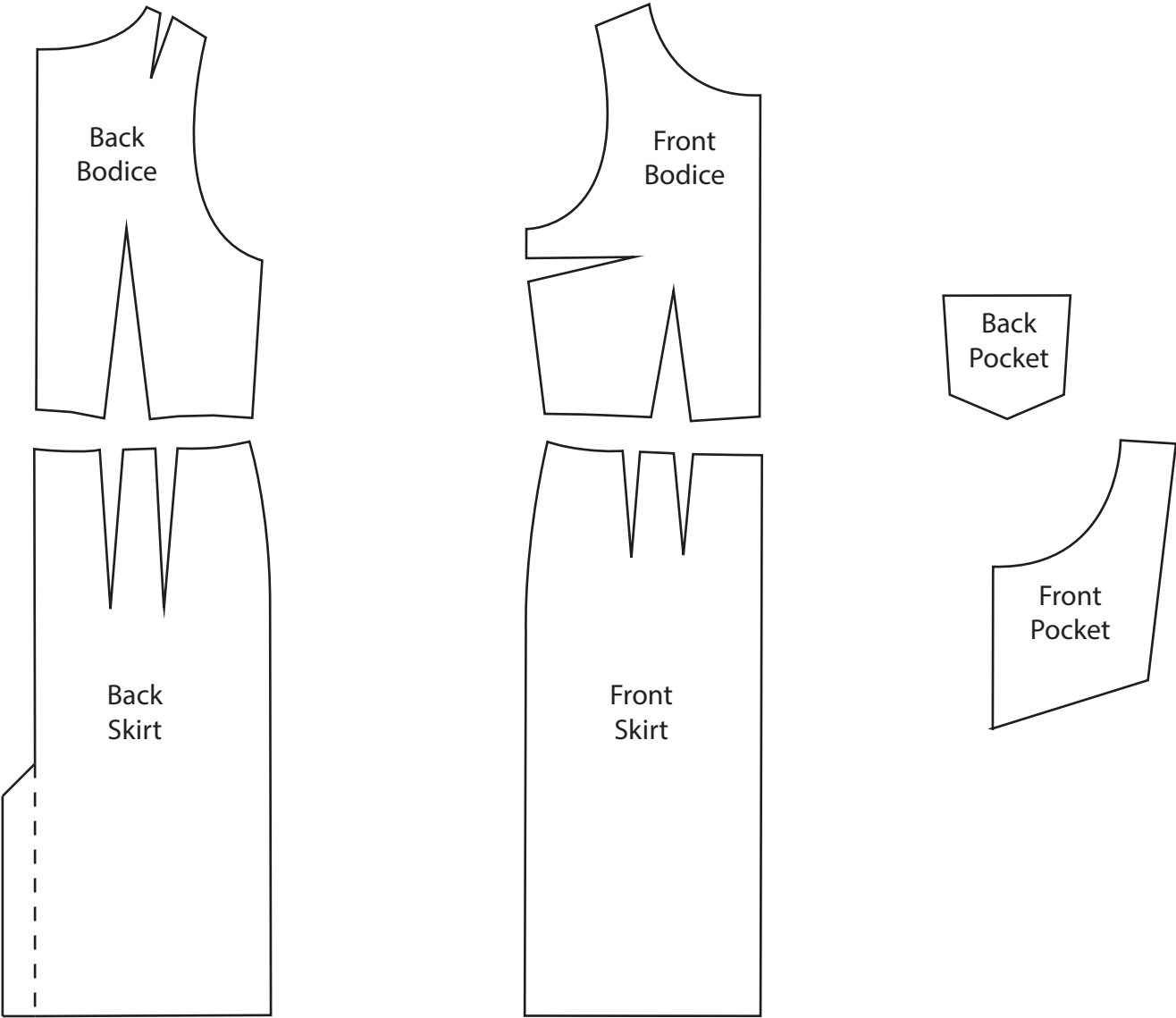


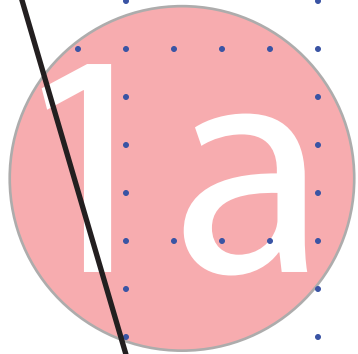
NOT TO SCALE

5/8" seam  
allowance is  
standard

The Pattern Pieces

NOT TO SCALE





# LETTER SIZE!

**\*\*Net Pattern\*\***  
**Add seam allowance**  
**as you cut out**  
**\*\*\*\*\***

Front Pocket  
Cut 2

Pinafore Dress  
721

← straight grain →

copyright angelakane.com.2005-2012  
all rights reserved

2a

**You can buy all my patterns, videos and ebooks.** They are the best value. Better still, join and get everything included!

medium

cut to lengthen or shorten  
back waist length

copyright angelakane.com 2005-2012

all rights reserved

Pinafore Dress

721

Centre Front

3a

**Buy bundles.** They are very good value -  
Patterns that go together with the videos  
and maybe an ebook.

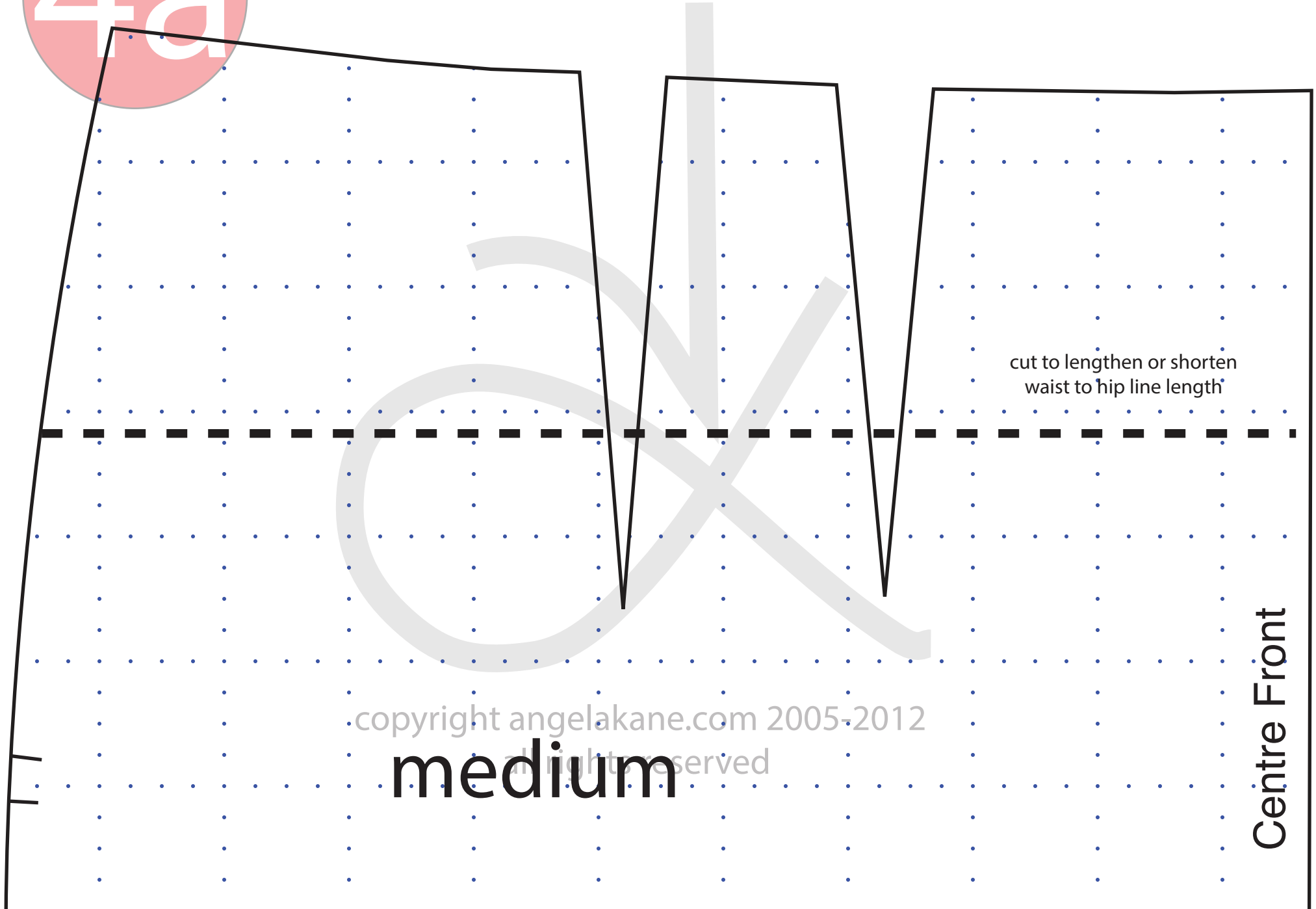
cut to lengthen or shorten  
waist to hip line length

Centre Back

copyright angelakane.com 2005-2012  
all rights reserved

4a

This has to be the cheapest  
**Sewing School** around.





1b

medium

cut to lenthen or shorten  
back waist length

Pinafore Dress  
721

Bodice Back  
Cut 2

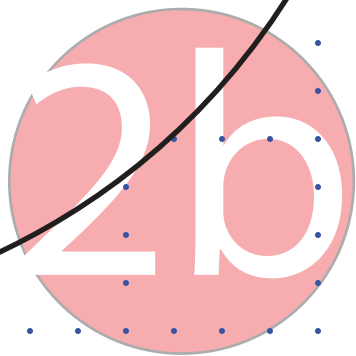
Have you  
enjoyed  
making up this  
pattern.?

**Please rate it -**  
send me an  
email  
[angela@angela  
kane.com](mailto:angela@angela<br/>kane.com)

entre Back

ght. grain

copyright angelakane.com 2005-2012  
all rights reserved



Bodice Front

Place on Fold

Cut 1

**\*\*Net Pattern\*\***

**Add seam allowance  
as you cut out**

\*\*\*\*\*

place along fold

Copyright Angela Kane 2005-13

All Rights Reserved

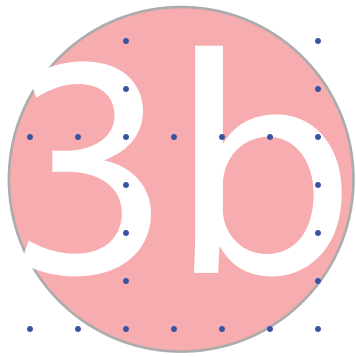
Please Do Not Distribute

By purchasing the download  
you agree to make prints  
solely for your own use

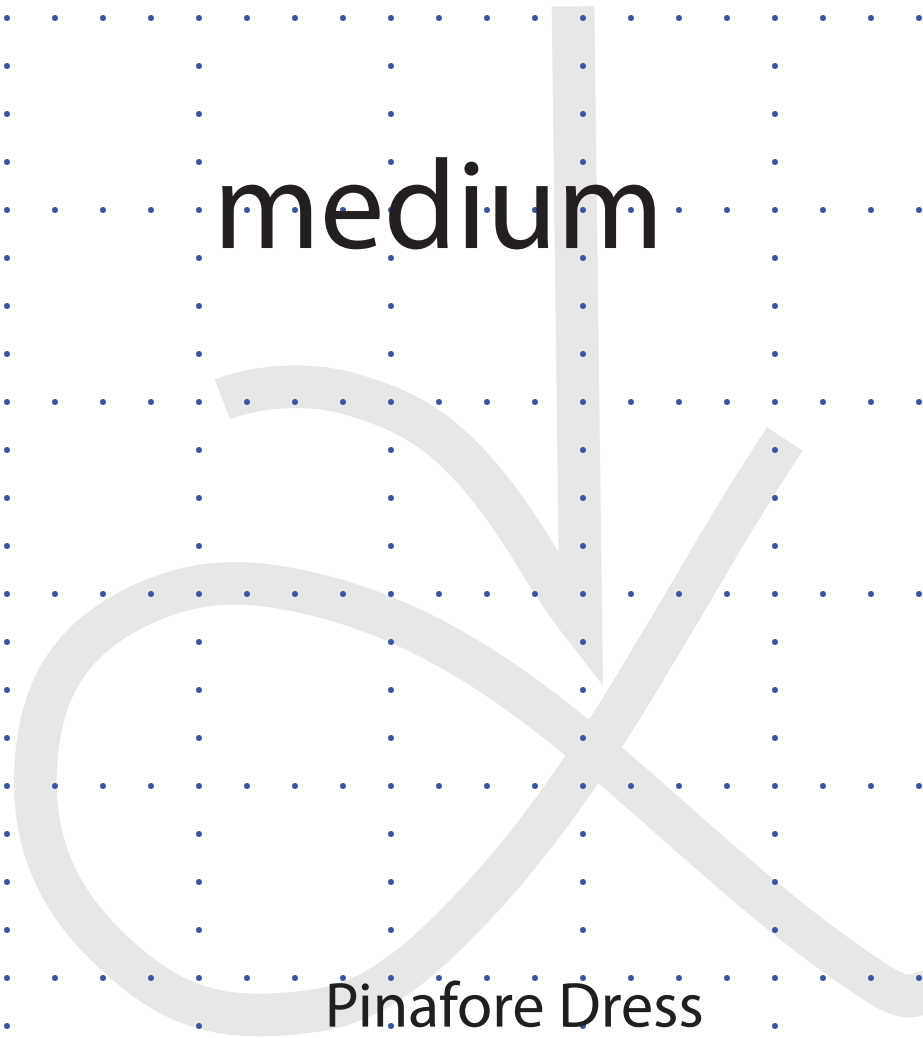
STRICTLY NOT FOR COMMERCIAL USE

cut to lengthen or shorten  
back waist length

copyright angelakane.com 2005-2012  
all rights reserved



medium



Pinafore Dress

721

copyright angelakane.com 2005-2012

all rights reserved

Skirt Back

Cut 2

Straight Grain

4b

Pinafore Dress

721

Skirt Front

Place on Fold

Cut 1

**\*\*Net Pattern \*\***

**Add seam allowance  
as you cut out**

copyright angelakane.com 2005-2012

all rights reserved



fold

ce

1c

strain

**\*\*Net Pattern\*\***  
**Add seam allowance**  
**as you cut out**

\*\*\*\*\*

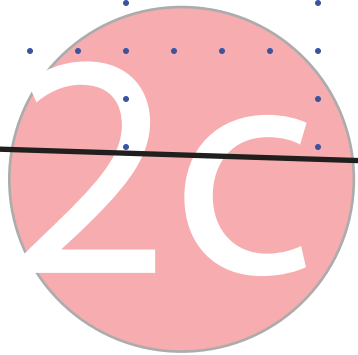
cut to lengthen or shorten  
back waist length

Copyright Angela Kane 2005-13  
All Rights Reserved  
Please Do Not Distribute

By purchasing the download  
you agree to make prints  
solely for your own use

copyright angelakane.com 2005-2012  
all rights reserved

STRICTLY NOT FOR COMMERCIAL USE



Pinafore Dress  
721

Back Pocket  
Cut 2.

**\*\*Net Pattern\*\***

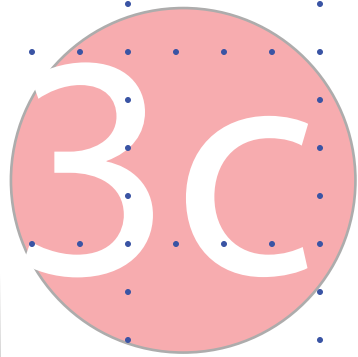
**Add seam allowance  
as you cut out**



straight grain



copyright angelakane.com 2005-2012  
all rights reserved



**\*\*Net Pattern \*\***

**Add seam allowance  
as you cut out**

\*\*\*\*\*



copyright angelakane.com 2005-2012  
all rights reserved



Lengthen or shorten for desired skirt length - add 1-2" for hem



4c



place along  
↓

copyright angelakane.com 2005-2012.  
Lengthen or shorten for desired skirt length - add 1-2" for hem  
↓